

Ashton Woods Subdivision

PLANNING PLAT
 WY HUNTER, LLC
 1800 West King Street
 Martinsburg, WV 26150
 304-263-2776

6 Miles Northeast of Moorefield, WV
 Moorefield Dist., Hardy County, West Virginia
 Within reference to Deed from 270 Year 325, County of Hardy
 10' Contours by Aerial Photogrammetry

PLANNING MAP
 L. E. McPherson, Jr.
 Petersburg, WV 25127-4818

Down By: CEK

Revision
October 2014



House Completed or Under Construction

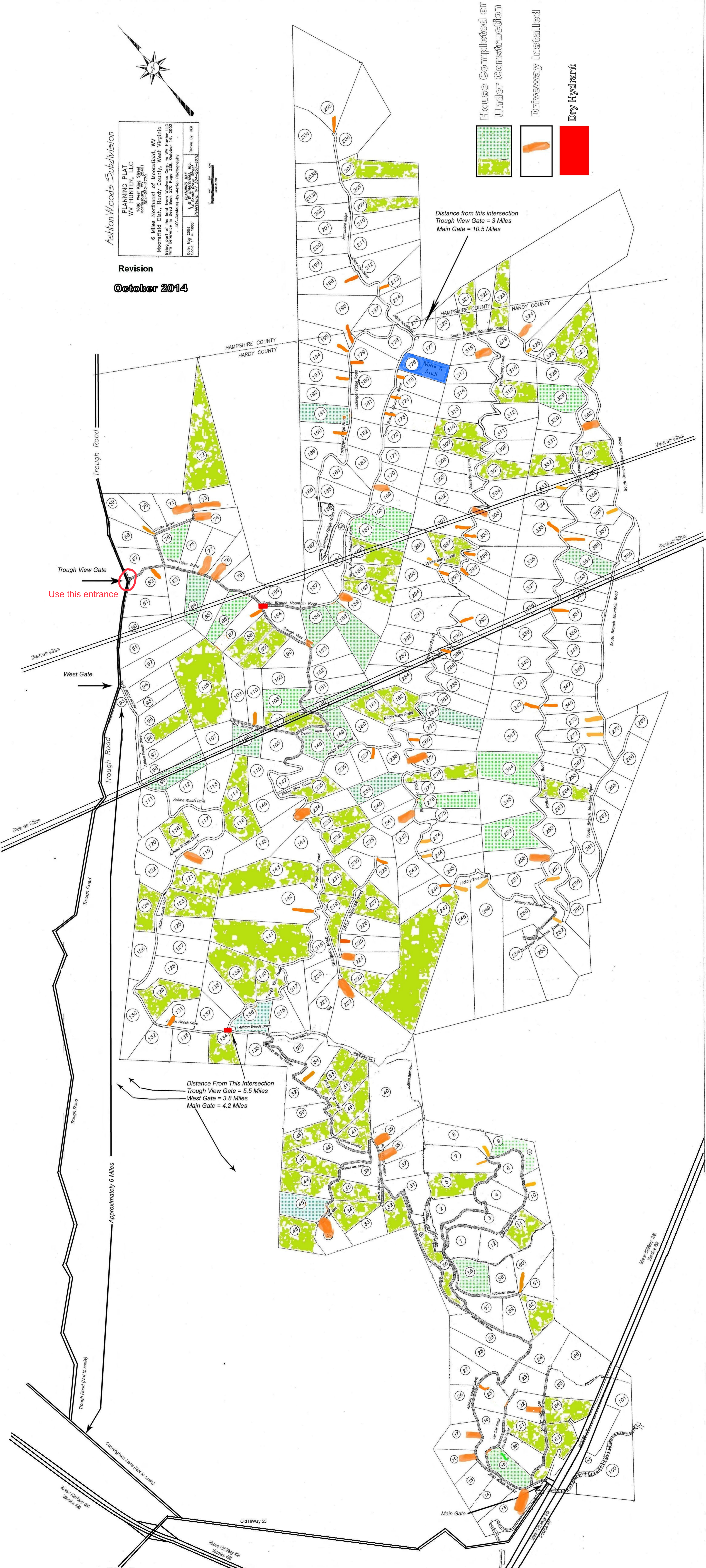
Driveway Installed

Dry Hydrant

Distance from this intersection
 Trough View Gate = 3 Miles
 Main Gate = 10.5 Miles

Distance From This Intersection
 Trough View Gate = 5.5 Miles
 West Gate = 3.8 Miles
 Main Gate = 4.2 Miles

Approximately 6 Miles



Old HWY 55

Old HWY 55

Old HWY 55

Old HWY 55

Old HWY 55