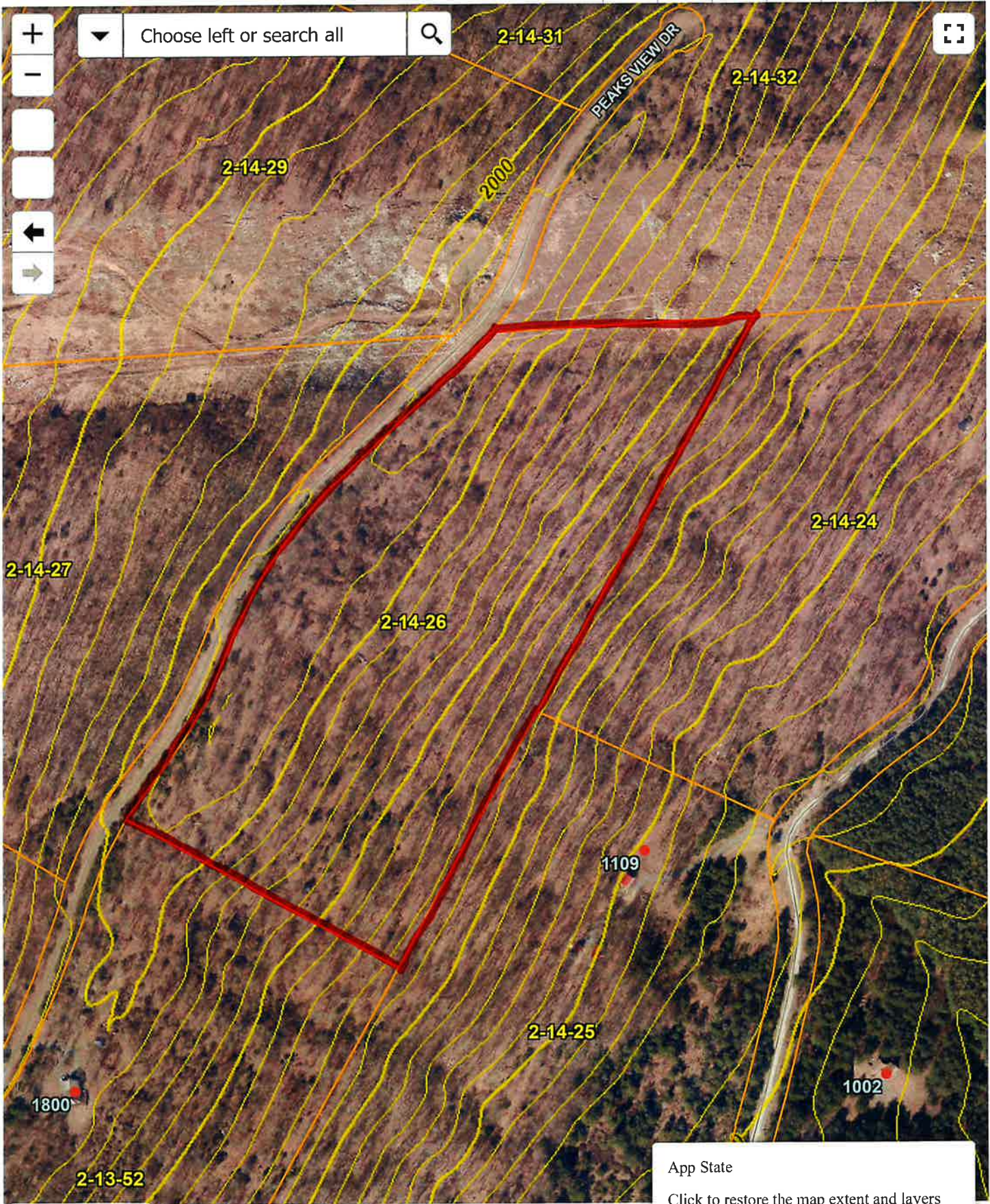


SECTION 2  
MAP BOOK 9 Pg. 176

CURVE	RADIUS	ARC LENGTH	CHORD LENGTH	CHORD BEARING	DELTA ANGLE
C1	17.83'	35.98'	30.17'	S 77°26'51" E	115°38'12"
C2	50.00'	180.35'	97.30'	N 16°15'07" E	206°42'47"
C3	50.00'	69.42'	63.98'	N 53°07'19" E	79°32'50"
C4	50.00'	145.07'	99.28'	N 39°11'27" E	166°14'24"
C5	50.00'	104.74'	86.61'	N 76°03'38" E	120°01'13"
C6	133.74'	174.40'	162.31'	S 41°39'16" E	74°42'57"
C7	193.74'	252.65'	235.12'	S 41°39'16" E	74°42'57"

# Hampshire Parcel Viewer



300ft  
-78.540 39.164 Degrees

App State  
Click to restore the map extent and layers visibility where you left off.