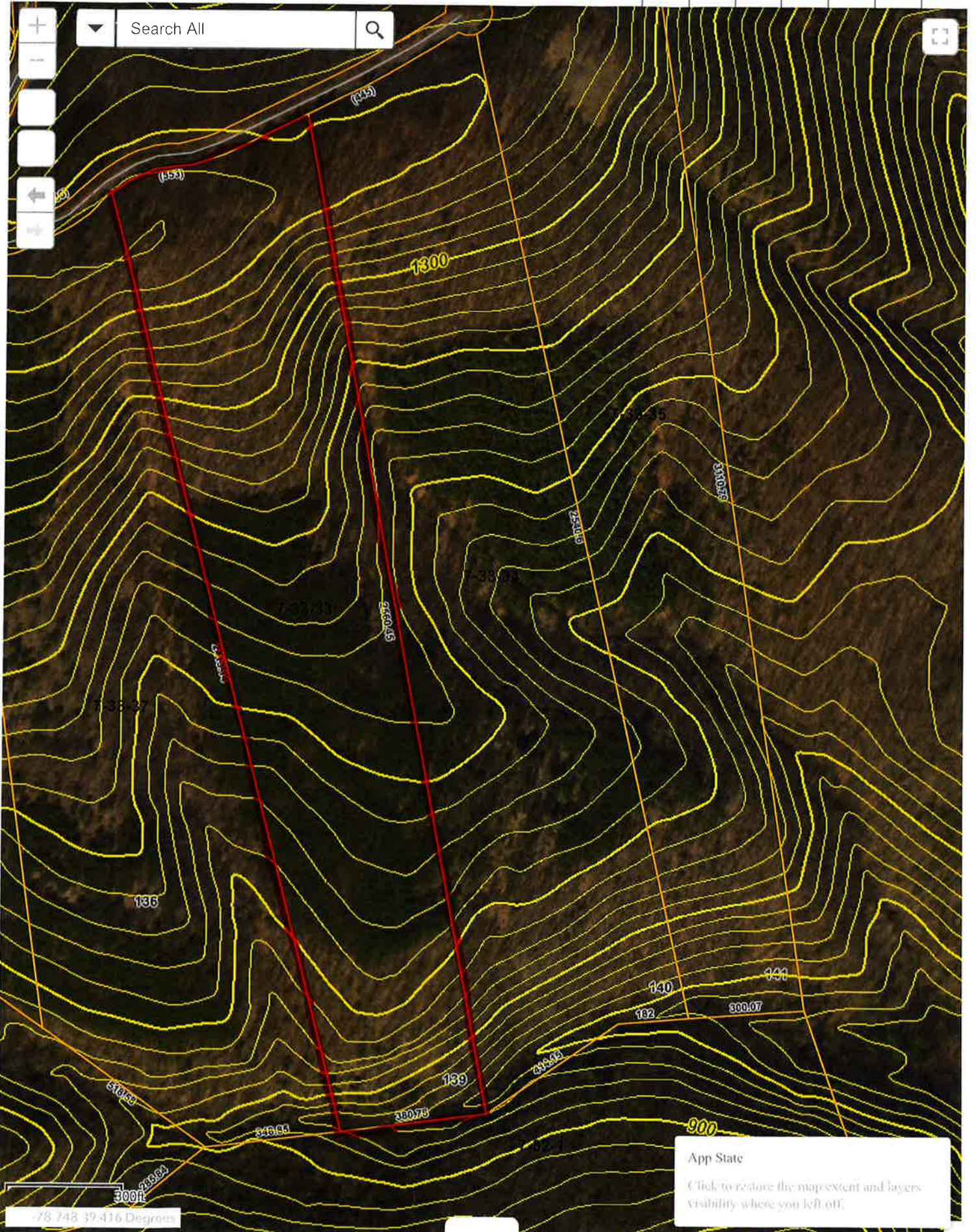


Hampshire Parcel Viewer



1382	3 57' 11" W	26.67
1383	3 31' 48" W	132.30
1384	3 18' 52" W	127.20

PART OF LOTS 112, 113, 114, 115, 116, AND 117 ARE IN ZONE A.
 PART OF LOTS 112 AND 113 ARE IN ZONE AL.
 SUBDIVISION ROADS DO NOT EXCEED 12 PERCENT GRADE EXCEPT
 IN CERTAIN SPOTS THAT MAY BE 17 PERCENT AND NO LONGER THAN 60 FEET.
 Being part of the land from Meadowbrook Corp. to WV Hunter, LLC
 With Reference to Deed Book 436 Page 638, Dated September 23, 2004
 in Hampshire Co. Clerks Office, Part of Tax Map 33-03.

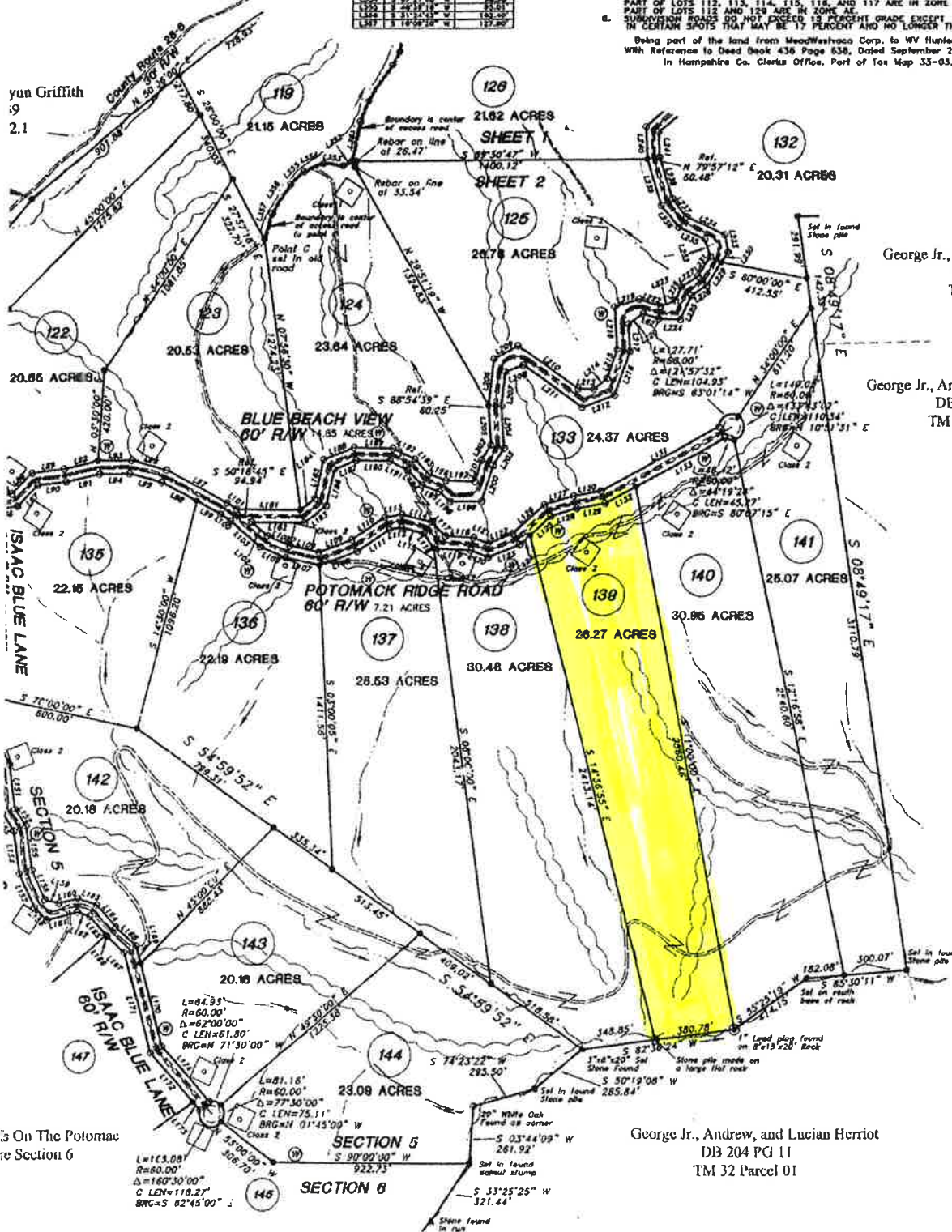
Patterson Cre
 Romni
 745.12 Acr
 8.41 Ac. in

Date: Aug. 23, 2008
 Scale: 1" = 300'

Scale in Feet
 0' 300' 600'

Hampshire Co. Health Dep

yun Griffith
 19
 2.1



George Jr., Andrew, and Lucian Herriot
 DB 204 PG 11
 TM 33 Parcel 04

George Jr., Andrew, and Lucian Herriot
 DB 204 PG 11
 TM 33 Parcel 05

**BLUE BEACH VIEW
 R/W CALLS 60'**

LINE	BEARING	LENGTH	BEARING	LENGTH
L181	N 89°20'14" W	252.40		
L182	E 84°50'18" E	128.40		
L183	N 51°37'47" C	128.40		
L184	S 21°19'21" W	128.40		
L185	N 54°20'18" W	163.20		
L186	N 17°02'18" E	173.44		
L187	N 88°04'13" E	111.92		
L188	S 82°00'13" W	124.25		
L189	N 87°02'18" W	124.25		
L190	S 89°03'08" E	164.38		
L191	S 84°29'42" E	92.17		
L192	N 84°29'42" E	92.17		
L193	S 89°03'08" E	164.38		
L194	S 45°30'11" E	98.11		
L195	S 10°18'40" E	92.17		
L196	N 79°19'00" W	261.15		
L197	N 79°19'00" W	134.22		
L198	S 48°22'42" E	98.11		
L199	N 87°39'54" E	148.80		
L200	N 18°01'35" E	172.85		
L201	S 42°08'13" W	124.25		
L202	S 51°17'11" W	83.21		
L203	N 31°17'13" E	96.88		
L204	N 04°08'31" W	181.80		
L205	S 04°08'31" W	124.25		
L206	S 06°17'13" E	221.18		
L207	N 08°17'13" E	164.38		
L208	N 68°41'39" C	82.18		
L209	S 41°19'25" W	124.25		
L210	N 54°19'25" W	124.25		
L211	S 54°19'25" E	124.25		
L212	N 69°25'09" E	164.38		
L213	N 69°25'09" E	164.38		
L214	S 39°24'09" W	73.18		
L215	S 19°02'51" W	143.74		
L216	N 19°02'51" E	118.81		
L217	N 03°53'31" W	124.25		
L218	E 03°53'31" E	300.60		
L219	S 72°49'00" E	124.25		
L220	N 58°04'21" E	64.01		
L221	S 72°18'58" E	77.24		
L222	N 72°18'58" W	108.84		
L223	S 07°21'45" W	184.47		
L224	S 08°48'34" E	104.20		
L225	N 14°28'13" E	124.25		
L226	S 14°28'13" W	68.07		
L227	S 14°28'13" W	68.07		
L228	N 57°52'18" E	87.24		
L229	N 33°11'51" E	128.79		
L230	N 33°11'51" E	226.47		
L231	S 33°11'51" W	108.84		
L232	S 19°04'14" E	85.77		
L233	N 10°49'48" W	81.79		
L234	N 83°31'39" W	202.35		
L235	S 83°31'39" E	134.80		
L236	S 18°07'21" E	133.90		
L237	N 59°02'22" W	108.18		
L238	N 17°15'04" W	202.35		
L239	S 17°15'04" E	226.47		
L240	S 02°50'31" E	163.12		
L241	N 02°50'31" W	118.81		

George Jr., Andrew, and Lucian Herriot
 DB 204 PG 11
 TM 32 Parcel 01

STATE OF WEST VIRGINIA, Hampshire County Commission Clerk's Office, November 8, 2008, 11:45 AM.
 The foregoing instrument, together with the certificate of its acknowledgment, was duly presented in said office
 and admitted to record.
 Sharon A. Link, Clerk