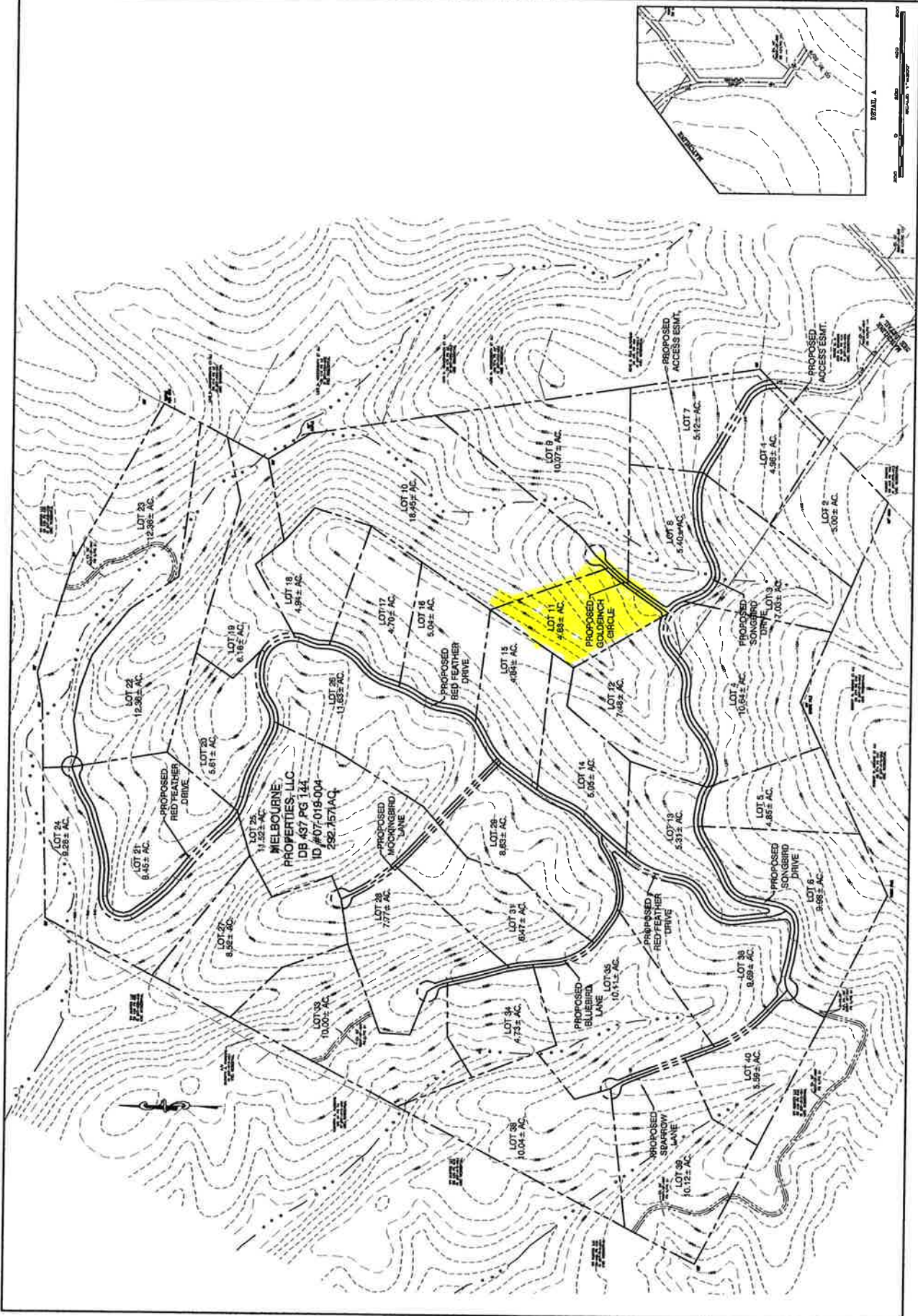


# Cardinal Ridge

<b>TRAD ENGINEERING, INC.</b> 200 MAIN ST. SUITE 200 WASHINGTON, VA 22602 PHONE: 540-426-2200 FAX: 540-426-2200 www.trad-engineering.com		<b>TRAD ENGINEERING, INC.</b> 10000 WOODBURN AVENUE SUITE 100 GREENSBORO, NC 27409 PHONE: 336-733-1111 FAX: 336-733-1111 www.trad-engineering.com	
Prepared By: <b>JCS/MAW</b> Checked By: <b>JKS/MAW</b> Date: 08-03-2005	Project No.: <b>07-09-0173</b> Scale: 1" = 200' Date: 08-03-2005	<b>REVISED OVERALL PLAN</b> <b>CARDINAL RIDGE ESTATES</b> <b>HAMPSHIRE COUNTY, VA</b>	

Drawing Number: **C-3**  
 Scale: 1" = 200'





Hampshire Parcel Viewer

7-19-179

Show search results for 7-19-179

Map navigation controls: +, -, pan arrows, and zoom in/out buttons.

200ft

-78.725 39 34.8 Degrees





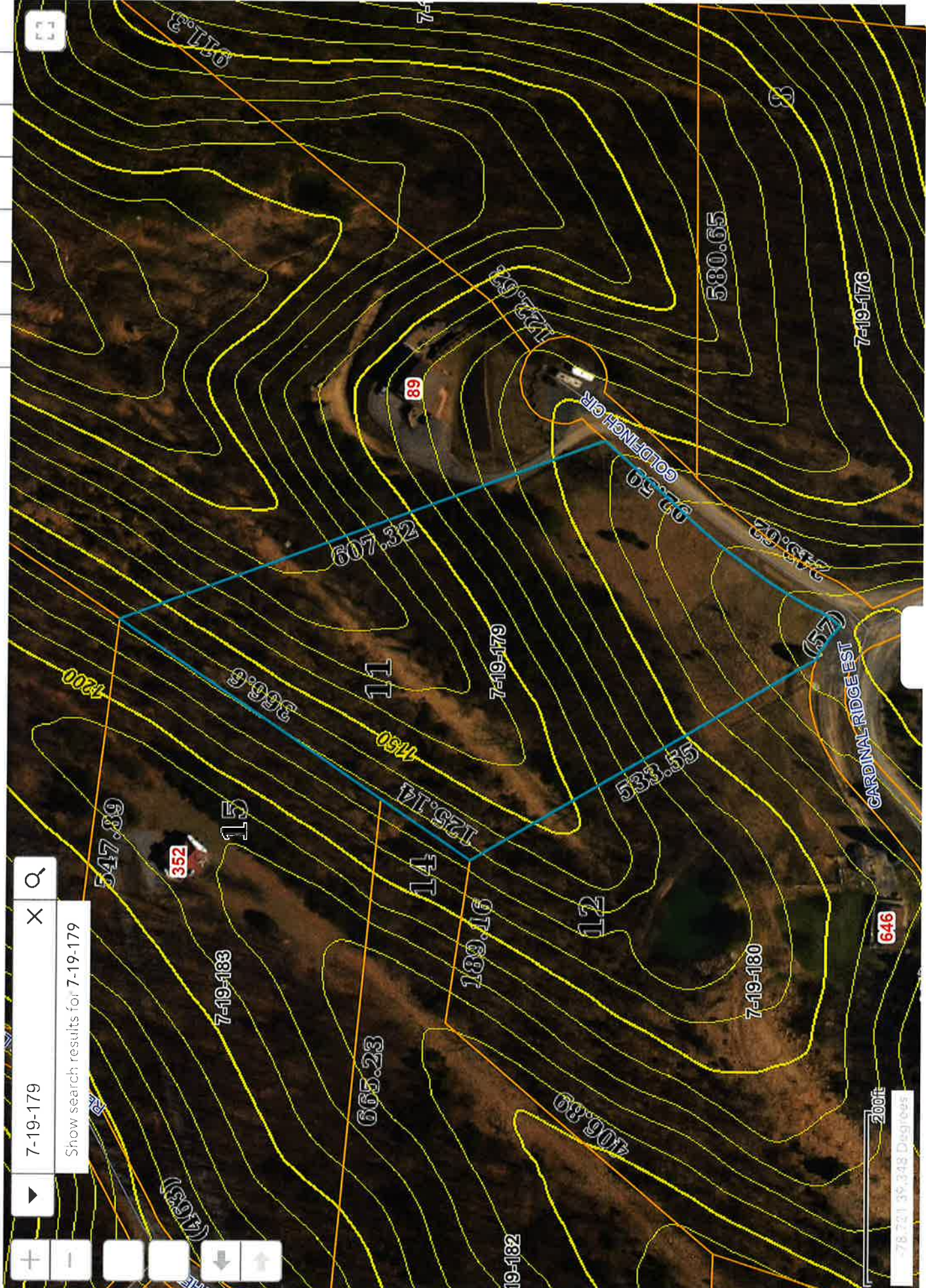
# Hampshire Parcel Viewer

7-19-179 X Q

Show search results for 7-19-179



+ - [Map Style Selection] [Map Style Selection] [Map Style Selection]



200ft  
-78.721 39.328 Display